

ARTFUL DOMAIN

“YOU WALK IN THIS HOUSE AND IT’S A MASTERPIECE, BUT THEN, OF COURSE, WE HAD TO MAKE IT WORK FOR THE FAMILY, TOO, SO IT WAS INTRICATELY DESIGNED TO BE BOTH FUNCTIONAL AND LOOK LIKE A ONE-OF-A-KIND HOME,” SAID JAIMIE ANAND, CEO AND LEAD DESIGNER FOR JAIMIE ANAND INTERIORS.



BY KIMBERLY A. SUTA | PHOTOGRAPHY BY ALBERTO VASQUEZ

Located in the hallway downstairs, hanging above a console from Tonelli Furniture, this custom designed Ganesh art piece was a thrilling collaboration with artist Analy Diego from San Antonio. The art represents a religious figure and is painted on acrylic.



JAIMIE ANAND INTERIORS (BASED IN AUSTIN), recently completed the interior design for a stunning home located in San Antonio's Dominion neighborhood. The homeowner wanted a show home that was also functional for the family, which includes two young boys.

This contemporary home comes with 7,000-square-feet of living space as well as an elevator, pool and garage. It's extremely eclectic with a focus on the artistic furnishings and accessories, including original artwork and lighting. "I love getting to be creative and use different materials, colors and patterns. It shocks most people if they're not into art, but this client was very open to a lot of it," she said.

From the moment you arrive, pops of color delight and

Jaimie needed the foyer to set the tone for the rest of the house with generous pops of fuchsia and lots of modern elements. Framing the entrance, the chic modern planters in the exterior are from ePlanters and the faux plants are from Creative Branches in Houston. Jaimie used accent tile at the entryway with an ET2 flute chandelier overhead and custom chairs by Nathan Anthony Furniture. The fabrics were sourced and then mailed to them to have the chairs made. Upon entry, a metal sculpture painted with high-gloss automotive paint is by Miren Itxasco and down the hallway, gorgeous blown-glass sculptures were custom created by Jeffries Glass, based out of Los Angeles.

The custom abstract metallic wall made of MDF wood is the focal point in this family gathering space. Furniture includes a luxurious gray leather sectional from Natuzzi, custom chairs from Nicoline Furniture and a practical yet contemporary coffee table that rotates and can be enlarged.

The sculpture in the niche was custom made for the space with colors to match the design while the Sonneman Lighting chandelier, called the Tik-Tak™, is a fun touch that graciously illuminates the room.

draw you into this home, such as the fuchsia planters and chairs at the entrance, which were completely custom made. The clever use of the striking fuchsia also allows the client to easily change it out if and when they need a refresh. "Fuchsia is my favorite color to use — it's the color of my logo, too, but my client wanted to use fuchsia as well," shared Jaimie.

Virtually every aspect of the home is custom designed and created with the use of several different esteemed artists. Jaimie made an effort to not be repetitive when it came to even the fixtures and finishes. Instead of choosing just one and running it thematically throughout the house, she chose to use mixed metals, specifically chrome, soft brass



and matte black. “Most people wouldn’t think to do this, but mixing can really work,” she noted.

One of the key show pieces is the original artwork of a Ganesh, located above the console table on the side of the living room. “This client wanted actual art in his home — original art that not just anyone could get, including the furniture. Literally everything on the walls is custom,” she said. At first glance, you might mistake the Ganesh for a mural, but it’s, in fact, a mounted piece painted on acrylic. Jaimie worked closely with the artist to select the colors and adjust as needed.

The theatre room, while contemporary, is also a cozy space for family and friends to relax. It features a full kitchen, including a full-size popcorn machine. Here is where Jaimie painted with light by using LED lighting, strip lighting and decorative sconces to give the room a modern Hollywood vibe. The columns add yet another element to the elaborate design.

The kitchen shines like a new penny with porcelain floor tile and the use of a high gloss laminate finish by Salt on the expansive cabinetry. “I love the kitchen, too! The way the light reflects off of the cabinets when it’s sunny or when the lights are on at night is just beautiful,” explained Jaimie. “But I would say our biggest focus in the kitchen is the ceiling design.”



The lighting in the kitchen was of primary importance, in order to make this gem really shine and showcase the high-gloss laminate cabinets and phenomenal quartz counters. All of the lighting in the kitchen is from ET2, while the table and chairs are Italian by Cattelan Italia. The large custom plant in the dining space is from Creative Branches.

With these rooms, Jaimie and the client wanted to bring in color but with more calming tones of different shades of blues. While sitting at the dining table, the family and guests can enjoy the serene Texas Hill Country vistas.



The primary suite is a study in modern sophistication with a blue Macaubas stone fireplace from Delta Granite in San Antonio, a leather chair from Nicoline Italia, lighting pendants above nightstands from Modern Forms and a stunning and luxurious bath.

All of the secondary bathrooms feature unique accent tiles with quartz countertops and use LED lit mirrors from Kohler®, floating cabinets and lighting from Modern Forms.

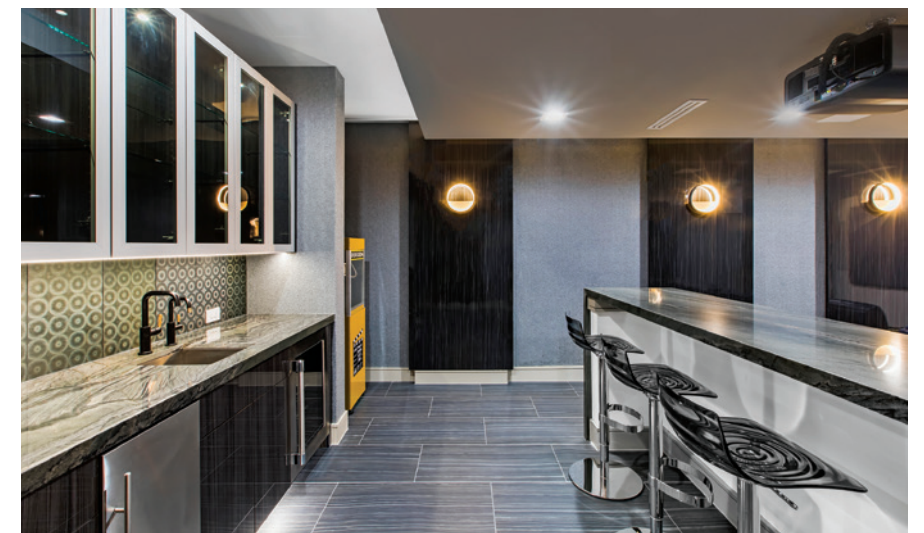
You may note that every room in the home has some sort of artistic ceiling element, even in the kitchen. Here, she chose a three-pendant lighting fixture, which was needed for a house of this scale. The lighting in the kitchen and throughout the house is “smart,” and can be adjusted via an app.

Lighting is also used to showcase the living room — in this case an abstract tic-tac style lighting fixture by Sonnemon that emits a surprising amount of light. The fireplace, too, was custom built using three-dimensional stone with metallic finishes and the glass sculpture in the large cubby was custom designed by an artist in Mexico. The accent wall was sketched out by Jaimie, indicating the

exact pattern that she envisioned and made out of MDF board, which was also painted a metallic color.

The game room may showcase this home’s most interesting design element with the use of funky bright green wall tiles that’s an art piece in and of itself and is the perfect background for the client’s beloved San Antonio Spurs Poker Table made by Pharaoh.

“It started with the countertop. The client wanted to use green onyx in the home, and so we used it here and in the bathroom that connects to it. The geometric shaped tiles are even something I wouldn’t have originally thought to use but it works here, along with the custom stools by Amisco. Everything here is picture perfect,” she said.



Finally, this home comes with two ground floor master bedrooms to accommodate the family's needs. The primary suite features a custom headboard from Blend Furnishing that was installed in pieces — an intricate process that requires exact measurements but looks absolutely incredible when completed perfectly.

Jaimie, who launched her company in 2015 and is a self-taught designer with an obvious natural flair, never ceases to impress her clients and all those who step into one of the homes she has designed. "I feel like I say this after every project, but this one was a fun one to do. It was fun to play with colors. The client said that one of the reasons he hired me was because of how I use color," she shared. ♦

JAIMIE ANAND INTERIORS

512-573-2484 | jaimieanand.com

LEFT: LED lighting is used with an exhilarating mix of patterns and colors to create a one-of-a-kind game room with accompanying bar. The green onyx counter is the star here, complemented by custom barstools from Amisco. The poker table was custom made with the Spurs logo and client's initials, by Pharaoh in Los Angeles. The furr-down ceilings also have three separate fixtures to elevate the space.

RIGHT: The theatre room was designed to entertain both family and friends. LED lighting is generously used for a dramatic effect, along with sconces from ET2. The comfortable navy-colored leather sofas are from Seat Craft. This room comes complete with a full kitchen, to make entertaining more convenient.